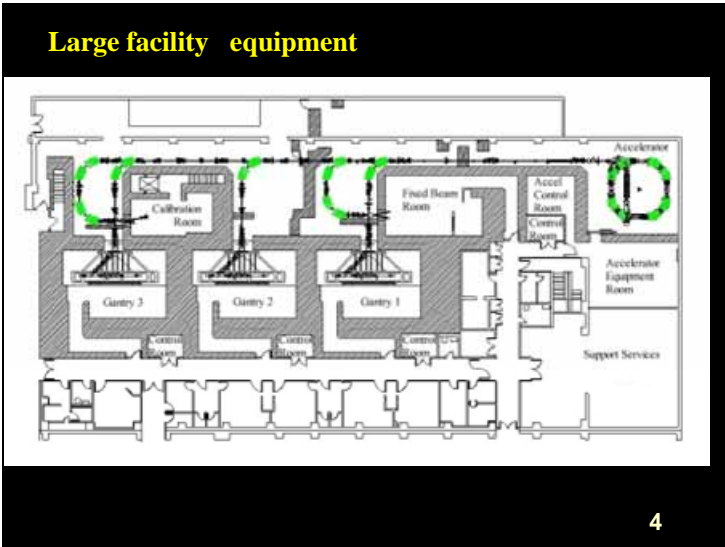
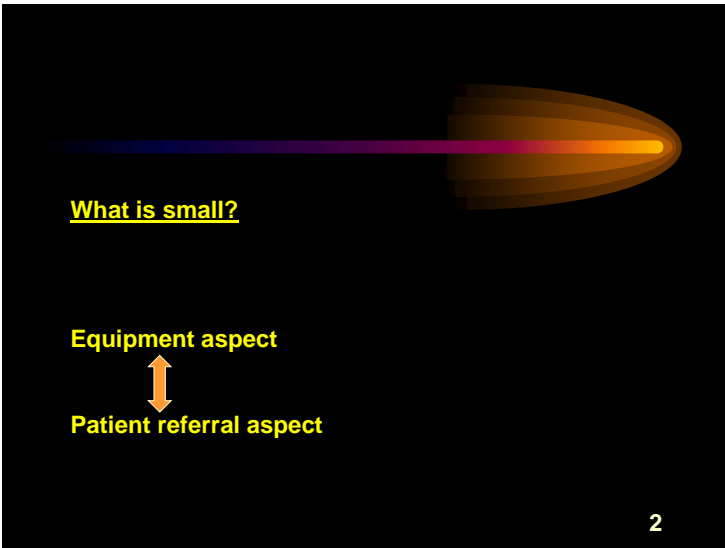
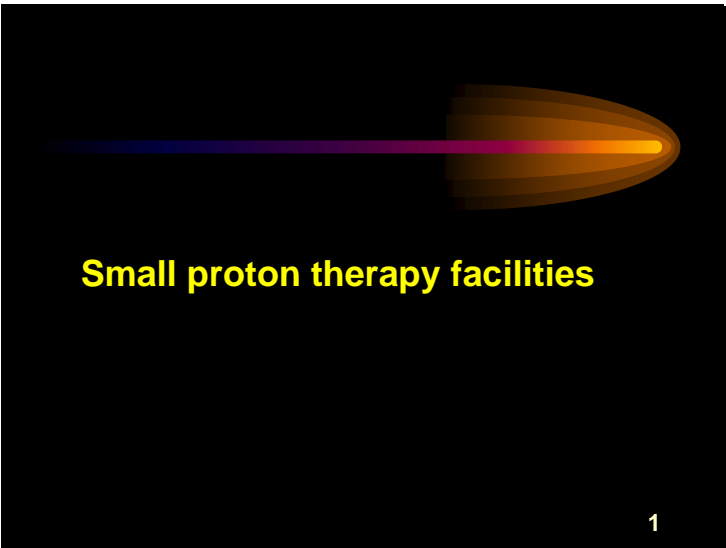




Small proton therapy facilities - F. Venimmen






Large facility

- Has to drain a fairly large population area
- High cost ; can antagonize government departments, medical insurance companies and other medical professionals
- possible uncertainty concerning patient numbers
- no direct input in the proton treatment by the initial clinician involved, with possible loss of interest in referring patients
- need for new imaging infrastructure in the new facility

5



Small facilities Equipment

A series of "single room facilities" are now becoming available

- Monarch system
- Protom system
- DWA system


6



Still/River SYSTEMS Proton Therapy

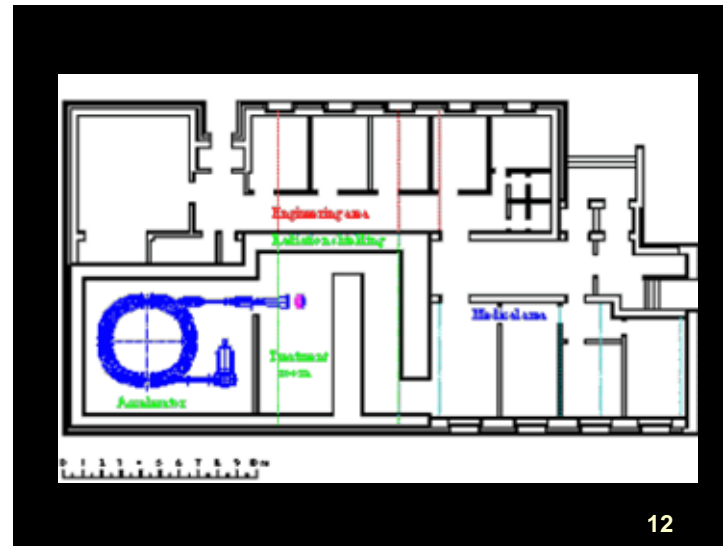
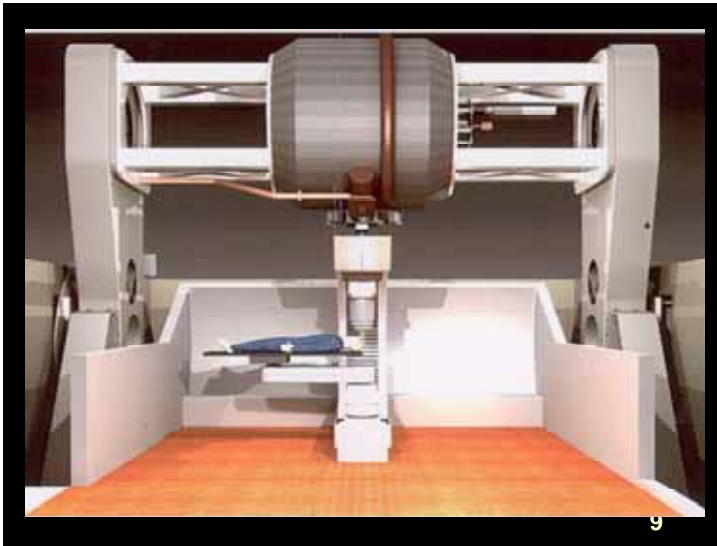
- Single Room contains all equipment
- Gantry mounted cyclotron
- Clean clinical environment
- Integrates into existing Cancer Centers
- Fully IMPT compatible

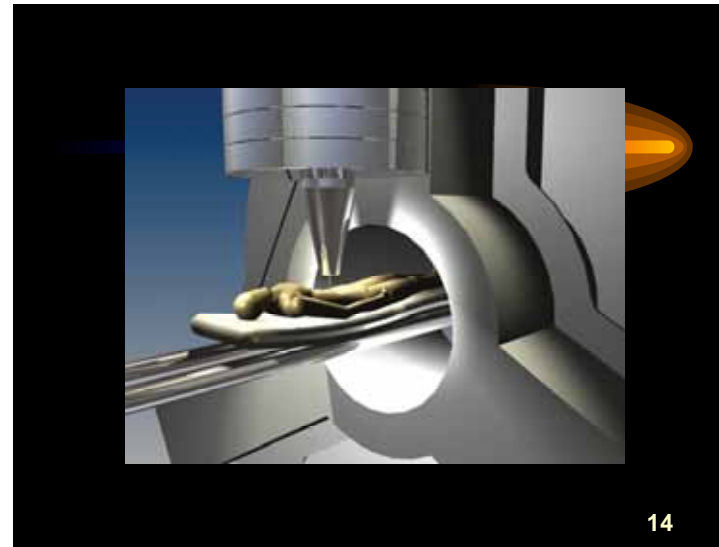
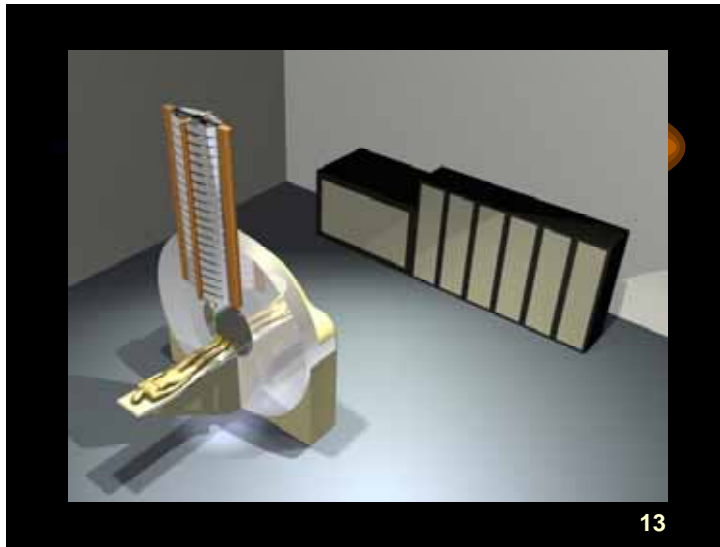
Has not received FDA 510k clearance



Still/River SYSTEMS Proton Therapy

Has not received FDA 510k clearance





- Small facility
- cheaper
 - offers "in house" proton therapy
 - existing imaging equipment and other infrastructure can be used
 - can be expanded as demand/indications grow
- 15



